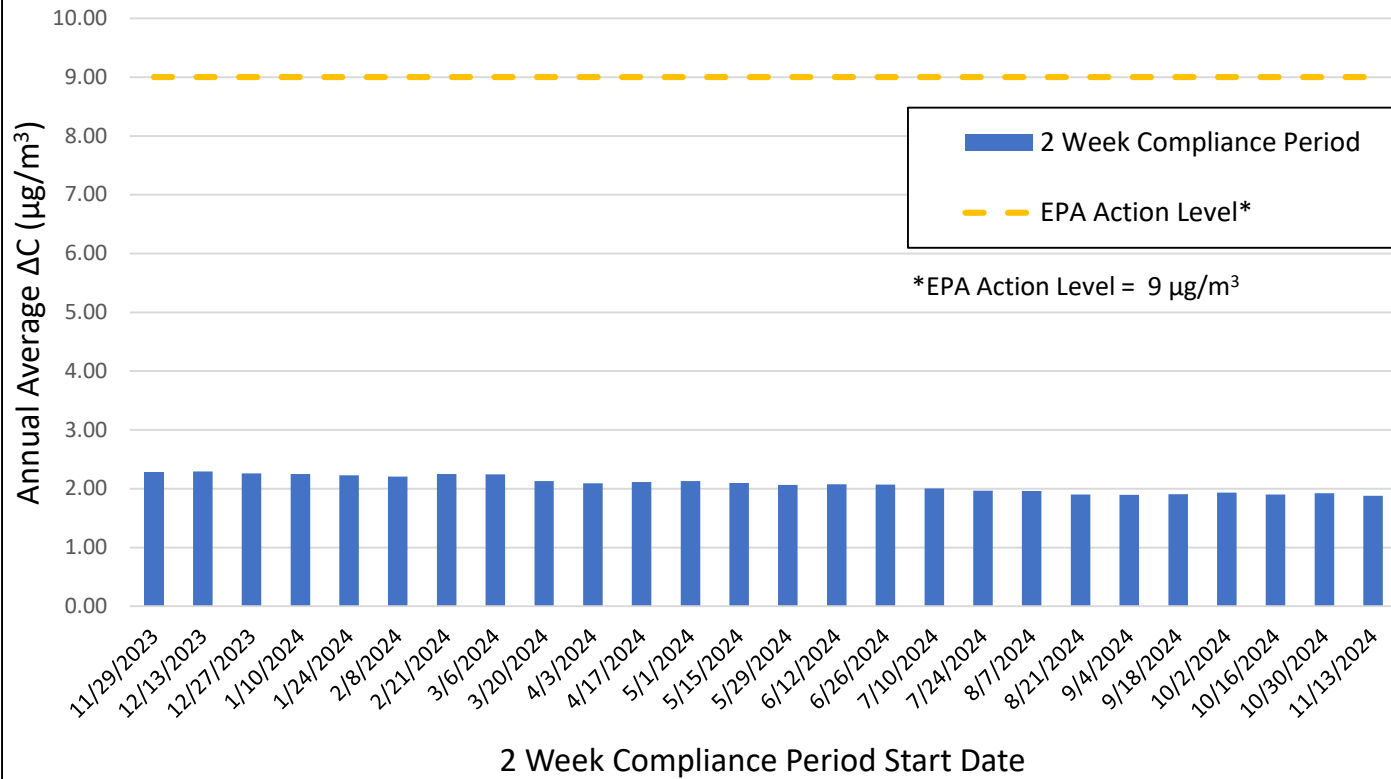
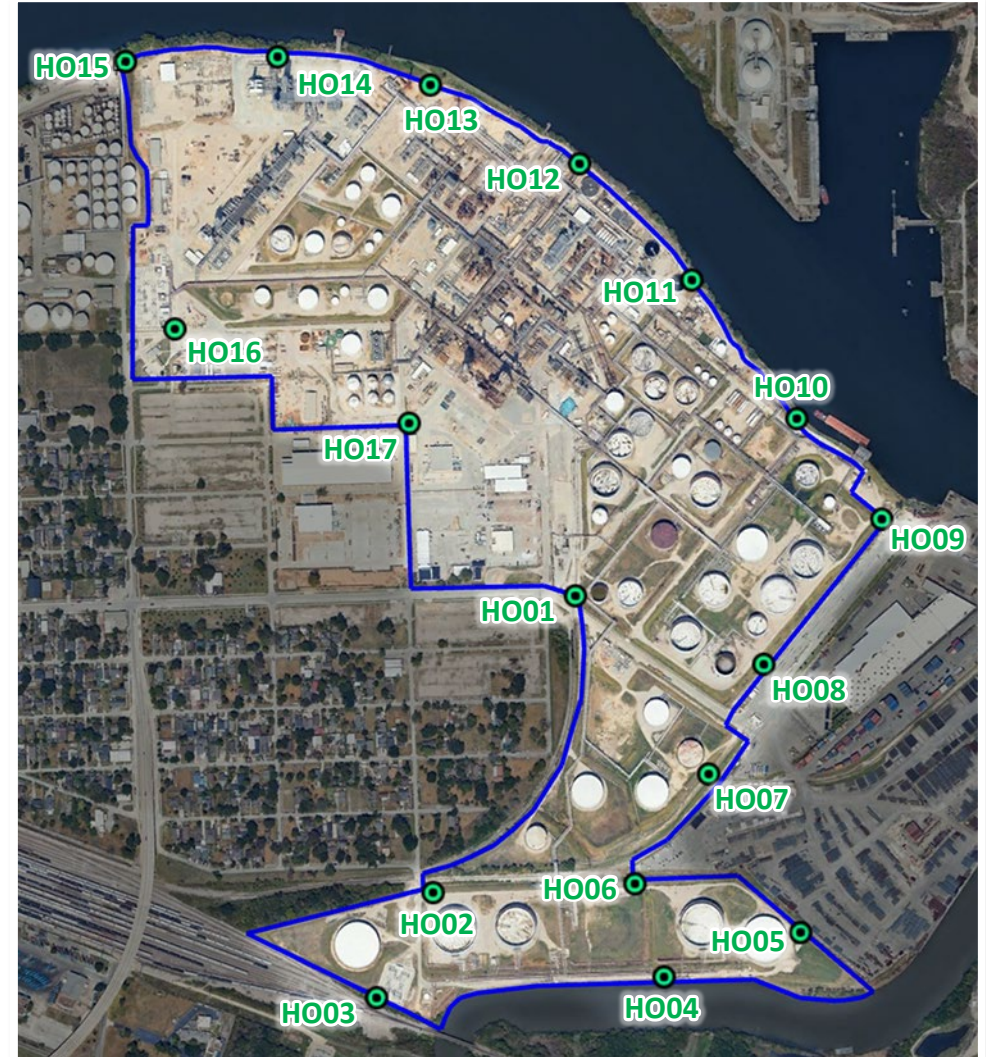


# Benzene Fenceline Monitoring

BENZENE FENCELINE ROLLING ANNUAL AVERAGE CONCENTRATION  
11/29/2023 - 11/26/2024



Annual Rolling Average $\Delta C$ as of 11/26/2024	1.88 $\mu\text{g}/\text{m}^3$
--	-------------------------------



\* The EPA action level is not a regulatory limit or a health-based level of exposure, instead it serves as an action level to conduct further investigation.

Houston Benzene Concentrations (µg/m3) at Sampling Locations																										
Sampling Location	Compliance Event 153	Compliance Event 154	Compliance Event 155	Compliance Event 156	Compliance Event 157	Compliance Event 158	Compliance Event 159	Compliance Event 160	Compliance Event 161	Compliance Event 162	Compliance Event 163	Compliance Event 164	Compliance Event 165	Compliance Event 166	Compliance Event 167	Compliance Event 168	Compliance Event 169	Compliance Event 170	Compliance Event 171	Compliance Event 172	Compliance Event 173	Compliance Event 174	Compliance Event 175	Compliance Event 176	Compliance Event 177	Compliance Event 178
	11/29/2023	12/13/2023	12/27/2023	1/10/2024	1/24/2024	2/8/2024	2/21/2024	3/6/2024	3/20/2024	4/3/2024	4/17/2024	5/1/2024	5/15/2024	5/29/2024	6/12/2024	6/26/2024	7/10/2024	7/24/2024	8/7/2024	8/21/2024	9/4/2024	9/18/2024	10/2/2024	10/16/2024	10/30/2024	11/13/2024
	µg/m <sup>3</sup>	µg/m <sup>3</sup>	µg/m <sup>3</sup>	µg/m <sup>3</sup>	µg/m <sup>3</sup>	µg/m <sup>3</sup>	µg/m <sup>3</sup>	µg/m <sup>3</sup>	µg/m <sup>3</sup>	µg/m <sup>3</sup>	µg/m <sup>3</sup>	µg/m <sup>3</sup>	µg/m <sup>3</sup>	µg/m <sup>3</sup>	µg/m <sup>3</sup>	µg/m <sup>3</sup>	µg/m <sup>3</sup>	µg/m <sup>3</sup>	µg/m <sup>3</sup>	µg/m <sup>3</sup>	µg/m <sup>3</sup>	µg/m <sup>3</sup>	µg/m <sup>3</sup>	µg/m <sup>3</sup>	µg/m <sup>3</sup>	µg/m <sup>3</sup>
HO1	2.51	2.47	2.18	2.75	1.95	1.72	1.90	2.06	1.97	1.43	2.47	2.68	2.21	2.69	3.31	1.94	2.68	1.83	1.57	3.30	1.59	1.81	2.63	2.84	2.68	2.23
HO2	2.55	2.18	2.18	1.88	1.72	1.40	1.76	2.05	1.88	1.67	1.87	2.80	2.48	2.51	3.26	1.77	2.42	1.60	1.61	3.21	1.69	1.68	2.53	2.89	2.39	2.34
HO3	2.12	1.79	1.89	1.73	1.54	1.28	1.32	1.59	1.45	0.87	1.03	1.70	1.28	1.65	2.17	1.21	2.04	0.94	1.19	2.42	1.66	1.40	2.47	1.93	2.12	2.05
HO4	2.57	2.46	2.28	2.00	2.20	1.47	1.57	1.97	1.82	1.47	1.26	1.93	2.06	2.11	3.20	1.74	2.66	1.61	1.84	3.81	2.75	1.92	3.36	2.91	2.63	2.46
HO5	2.79	1.96	2.56	1.95	2.11	1.42	1.69	1.45	1.81	1.29	0.93	1.88	1.60	1.92	2.43	2.49	3.62	2.18	3.73	2.41	1.96	2.23	2.88	2.27	2.17	2.63
HO6	2.94	3.25	2.76	2.36	2.55	1.68	1.89	2.02	2.10	1.62	2.13	2.97	2.31	2.75	3.81	1.93	2.95	1.86	1.83	3.91	2.58	2.19	3.19	3.34	3.00	2.70
HO7	3.35	2.39	2.67	2.46	2.68	2.01	1.98	1.92	1.83	1.52	1.47	2.19	1.92	2.44	2.79	3.00	3.74	2.40	2.64	2.72	2.31	2.65	3.29	2.62	2.63	2.70
HO8	3.15	2.81	3.03	3.34	2.91	2.31	2.48	2.00	2.05	1.57	1.15	1.97	1.94	2.16	2.83	2.71	2.14	1.80	2.10	2.32	1.97	2.25	2.86	2.54	2.78	2.86
HO9	3.04	2.24	1.98	1.91	2.01	2.22	2.51	1.57	1.42	1.10	0.86	1.81	1.95	1.89	2.30	2.05	2.51	1.71	1.93	2.38	1.78	1.84	3.39	2.51	2.54	2.16
HO10	2.84	2.27	3.21	3.00	2.70	2.70	3.77	2.51	2.12	1.40	1.67	2.46	2.70	2.57	2.85	4.05	5.66	3.64	3.54	2.84	2.21	2.01	2.97	3.21	2.99	2.54
HO11	2.14	1.52	1.65	2.37	1.76	1.81	1.81	1.72	1.68	1.70	1.37	1.97	2.49	2.10	1.77	1.95	2.70	2.11	1.82	2.07	1.70	1.69	1.95	2.19	1.82	2.12
HO12	2.48	1.70	1.75	3.23	1.84	2.11	2.80	2.08	1.90	2.20	2.49	2.91	3.07	3.19	3.60	3.87	3.28	2.68	2.46	1.28	1.99	2.82	3.23	2.52	2.52	
HO13	2.22	1.96	1.65	2.70	1.78	1.76	1.76	1.71	1.73	1.52	1.45	1.65	2.19	2.21	1.93	1.59	2.52	1.89	2.15	1.95	1.16	1.46	1.73	2.25	1.90	2.14
HO14	1.93	1.71	1.37	1.79	1.44	1.12	1.25	1.27	1.41	1.07	1.13	1.37	1.69	1.63	1.63	0.99	1.94	1.07	2.17	1.85	0.96	1.40	1.38	1.68	1.53	1.75
HO15	2.00	1.56	1.34	1.58	1.58	1.26	1.47	1.28	1.21	1.10	0.99	1.49	1.57	1.43	1.60	1.12	1.91	1.14	3.08	1.56	1.08	1.35	1.35	1.79	1.41	1.58
HO16	1.96	1.79	1.53	1.36	1.54	1.07	1.44	1.24	1.39	0.87	1.02	1.35	1.48	1.60	1.75	1.23	1.98	1.12	1.04	1.99	1.21	1.39	1.90	1.70	1.75	1.43
HO17	2.44	1.97	1.71	1.87	1.63	1.21	1.45	1.43	1.53	1.14	1.38	1.86	1.76	2.10	2.41	1.50	2.06	1.44	1.51	2.61	1.39	1.59	2.29	2.48	2.21	1.93
MAX	3.35	3.25	3.21	3.34	2.91	2.70	3.77	2.51	2.12	1.90	2.47	2.97	2.91	3.07	3.81	4.05	5.66	3.64	3.73	3.91	2.75	2.65	3.39	3.34	3.00	2.86
MIN	1.93	1.52	1.34	1.36	1.44	1.07	1.25	1.24	1.21	0.87	0.86	1.35	1.28	1.43	1.60	0.99	1.91	0.94	1.04	1.56	0.96	1.35	1.35	1.68	1.41	1.43
DELTA	1.42	1.73	1.87	1.98	1.47	1.63	2.52	1.27	0.91	1.03	1.61	1.62	1.63	1.64	2.21	3.06	3.75	2.70	2.69	2.35	1.79	1.30	2.04	1.66	1.59	1.43
AVG DELTA	2.29	2.29	2.26	2.25	2.23	2.21	2.25	2.25	2.13	2.09	2.11	2.13	2.10	2.06	2.08	2.07	2.01	1.97	1.96	1.90	1.90	1.91	1.94	1.90	1.92	1.88