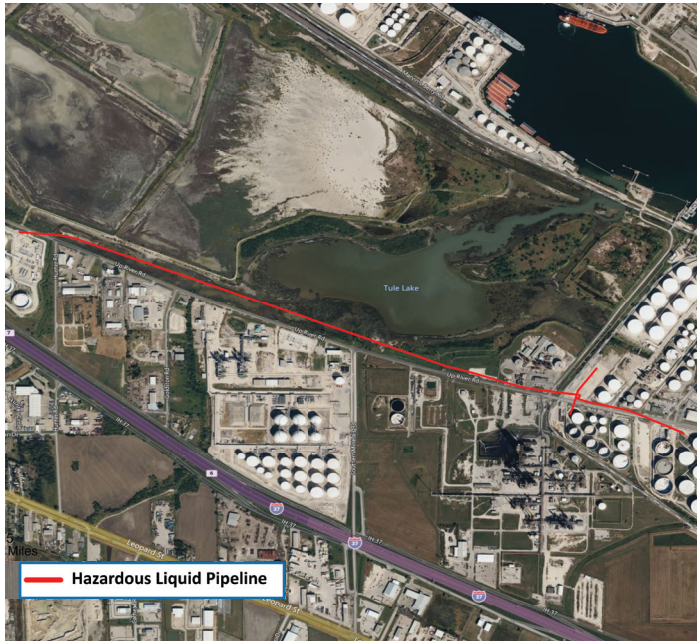
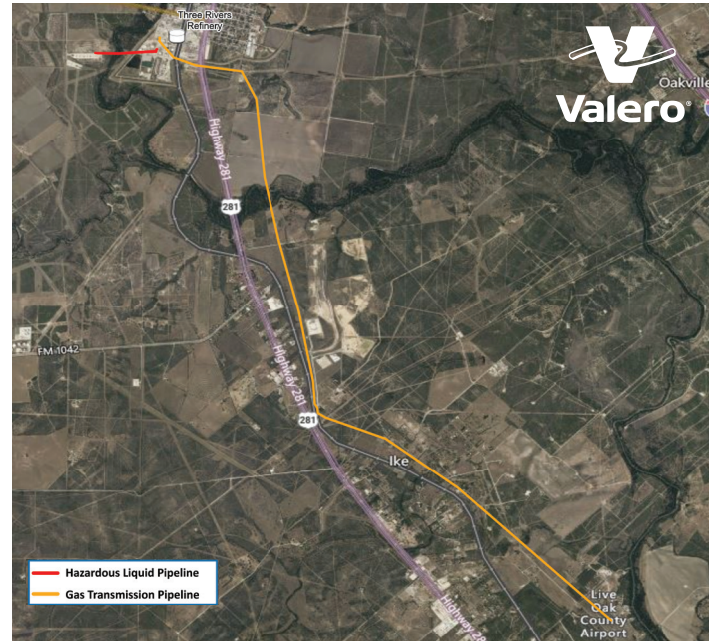


## VALERO SOUTH TEXAS OPERATIONS



## VALERO CORPUS CHRISTI AREA OPERATIONS

Sent on behalf of Valero Terminating and Distribution Company which operates 12" - 10" pipelines.



## VALERO THREE RIVERS AREA OPERATIONS

Sent on behalf of Valero Partners Operating Co LLC which operates 6" - 12" pipelines.

24 HOUR EMERGENCY NUMBER

866-432-0898

PRODUCT	LEAK TYPE	VAPORS	HEALTH HAZARDS
<b>Gas Transmission Pipelines</b>	Gas	Lighter than air and will disperse vertically into the atmosphere. Vapors may travel to source of ignition and flash back. Some Natural Gas lines contain an odorant and will smell of rotten eggs if a leak has occurred. Other types of leaks may be colorless, tasteless and odorless.	<p>Will be easily ignited by heat, sparks or flames and will form explosive mixtures with air. Vapors may cause dizziness or asphyxiation without warning and may be toxic if inhaled at high concentrations.</p> <p>Contact with gas may cause burns, severe injury and/or frostbite. Fire may produce irritating and/or toxic gases.</p>
<b>Hazardous Liquid Pipelines</b>	Liquid	Initially heavier than air, will spread along ground and collect in low or confined areas. Vapors may travel to source of ignition and flash back. Explosion hazards indoors, outdoors or in sewers.	Inhalation or contact with material may irritate or burn skin and eyes. Fire may produce irritating, corrosive and/or toxic gases. Vapors may cause dizziness or suffocation. Runoff from fire control or dilution water may cause pollution.



**SAFETY IS IN YOUR HANDS.  
EVERY DIG. EVERY TIME.**